



TORO.

IP65 LED corrosion batten lights are ideal for exposed, damp or humid applications such as car parks, commercial kitchens, underpasses, storage facilities and more. Direct replacement for T8 fluorescent tube corrosion proof fittings.

- ✓ CCT Tri-Colour - 3000K, 4000K & 6500K Switchable
- ✓ Multi Wattage Switchable
- ✓ Highly efficient 140 lumens per watt
- ✓ Heavy-duty stainless-steel clips
- ✓ Single gland knock-out at each end of the fitting & BESA mounting point.



Technical Specification

Product Details

Range Variants	Standard / Emergency / Microwave / Microwave + Emergency
Applications	Commercial or Semi-Commercial
Installation Options	Retail, Industrial, Semi Commercial & Commercial
UKCA & CE Compliant	Yes
RoHS Compliant	Yes
Guarantee Period	3 years (fitting), 2 year (battery)

Construction

Case Material	Polycarbonate
Case Colour	Grey
Diffuser Material	Polycarbonate
Diffuser Colour	Frosted
Clip Options	Stainless Steel
IP Rating	IP65
Impact Protection Rating	TBC
Dimensions	Details to below
Operating Temp (°C)	TBC
Cable Entry	20mm cable entry at each end of fitting.

Electrical Data

Voltage	220-240V AC
Frequency	50/60Hz
Wattage (illuminated)	13W to 57W
Battery Type	LifePO4 (Lithium)
Battery voltage	TBC
Emergency Wattage	TBC
Battery Life	>3 hours
Power Factor	TBA
Emergency	Maintained & Non-Maintained
Energy Rating	D
Earth Protection	Class I
Driver	Integrated
Dimmable	No

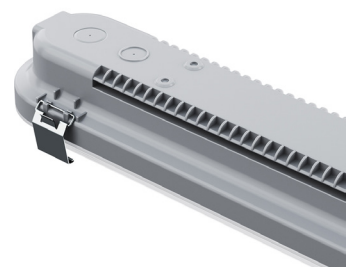
LED Data

LED Type	SMD
LED Microchip	2835
Lumens	1820 lm to 8400 lm
Lumens per watt	140 lm/W
Lms in Emergency mode	TBC
Colour Rendering Index	>=80 CRI
Colour Temperature	3000K (Warm White) 4000K (Cool White) 6500K (Daylight)
Beam Angle	120°
Instantaneous Illumination	Yes: <1 second
LED Lifetime	TBC

Product Family

4ft Battens

BTTOR4T	Standard	Single (l) 1200 x (w) 79 x (d) 85mm	20W / 25W / 30W / 35W	2800 - 4900 lm
BTTOR4T-MW	Microwave Sensor	Single (l) 1200 x (w) 79 x (d) 85mm	20W / 25W / 30W / 35W	2800 - 4900 lm
BTTOR4T-CF	Corridor Sensor	Single (l) 1200 x (w) 79 x (d) 85mm	20W / 25W / 30W / 35W	2800 - 4900 lm
BTTOR4T-EM	Emergency	Single (l) 1200 x (w) 79 x (d) 85mm	20W / 25W / 30W / 35W	2800 - 4900 lm
BTTOR4T-CFEM	Corridor Sensor + Emergency	Single (l) 1200 x (w) 79 x (d) 85mm	20W / 25W / 30W / 35W	2800 - 4900 lm
BTTOR6T-MWEM	Microwave Sensor + Emergency	Single (l) 1200 x (w) 79 x (d) 85mm	20W / 25W / 30W / 35W	2800 - 4900 lm



Product Family

5ft Battens

sku	type		watts	lumens
BTTOR55	Standard	Single (l) 1500 x (w) 79 x (d) 85mm	13W / 17W / 21W / 24W	1820 - 3360 lm
BTTOR55-MW	Microwave Sensor	Single (l) 1500 x (w) 79 x (d) 85mm	13W / 17W / 21W / 24W	1820 - 3360 lm
BTTOR55-CF	Corridor Sensor	Single (l) 1500 x (w) 79 x (d) 85mm	13W / 17W / 21W / 24W	1820 - 3360 lm
BTTOR55-EM	Emergency	Single (l) 1500 x (w) 79 x (d) 85mm	13W / 17W / 21W / 24W	1820 - 3360 lm
BTTOR55-CFEM	Corridor Sensor + Emergency	Single (l) 1500 x (w) 79 x (d) 85mm	13W / 17W / 21W / 24W	1820 - 3360 lm
BTTOR55-MWEM	Microwave Sensor + Emergency	Single (l) 1500 x (w) 79 x (d) 85mm	13W / 17W / 21W / 24W	1820 - 3360 lm
BTTOR5T	Standard	High Lumen (l) 1500 x (w) 79 x (d) 85mm	28W / 35W / 43W / 50W	3920 - 7000 lm
BTTOR55-CF	Corridor Sensor	High Lumen (l) 1500 x (w) 79 x (d) 85mm	28W / 35W / 43W / 50W	3920 - 7000 lm
BTTOR5T-EM	Emergency	High Lumen (l) 1500 x (w) 79 x (d) 85mm	28W / 35W / 43W / 50W	3920 - 7000 lm
BTTOR5T-MW	Microwave Sensor	High Lumen (l) 1500 x (w) 79 x (d) 85mm	28W / 35W / 43W / 50W	3920 - 7000 lm
BTTOR5T-CFEM	Corridor Sensor + Emergency	High Lumen (l) 1500 x (w) 79 x (d) 85mm	28W / 35W / 43W / 50W	3920 - 7000 lm
BTTOR5T-MWEM	Microwave Sensor + Emergency	High Lumen (l) 1500 x (w) 79 x (d) 85mm	28W / 35W / 43W / 50W	3920 - 7000 lm

6ft Battens

sku	type		watts	lumens
BTTOR6T	Standard	Twin (l) 1800 x (w) 79 x (d) 85mm	31W / 40W / 48W / 57W	4620 - 8400 lm
BTTOR6T-MW	Microwave Sensor	Twin (l) 1800 x (w) 79 x (d) 85mm	31W / 40W / 48W / 57W	4620 - 8400 lm
BTTOR6T-CF	Corridor Sensor	Twin (l) 1800 x (w) 79 x (d) 85mm	31W / 40W / 48W / 57W	4620 - 8400 lm
BTTOR6T-EM	Emergency	Twin (l) 1800 x (w) 79 x (d) 85mm	31W / 40W / 48W / 57W	4620 - 8400 lm
BTTOR6T-CFEM	Corridor Sensor + Emergency	Twin (l) 1800 x (w) 79 x (d) 85mm	31W / 40W / 48W / 57W	4620 - 8400 lm
BTTOR6T-MWEM	Microwave Sensor + Emergency	Twin (l) 1800 x (w) 79 x (d) 85mm	31W / 40W / 48W / 57W	4620 - 8400 lm

