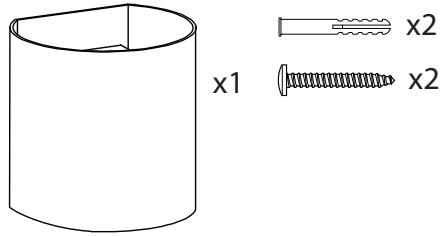
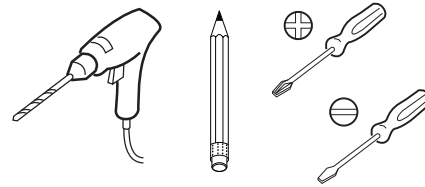


Parts Supplied

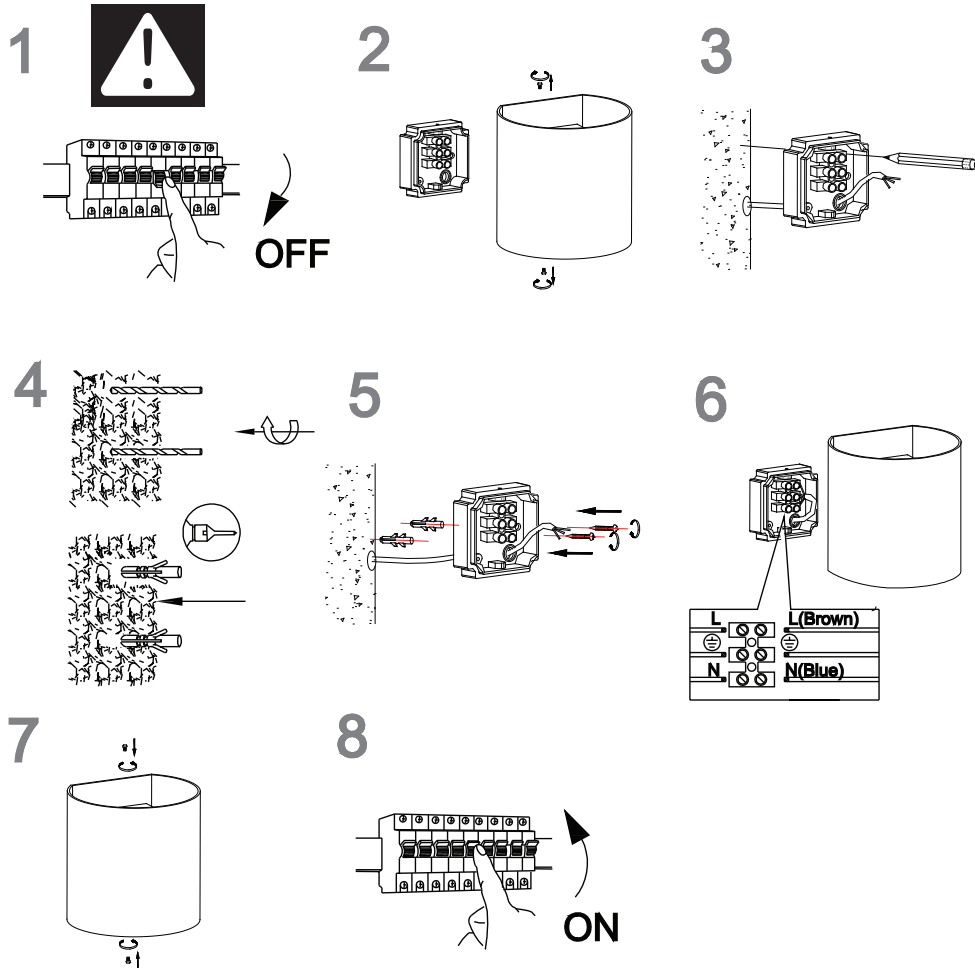


Tools required (not supplied)



Ins 29995 - C

Installation Instructions



Technical Data

Supply Voltage:	220-240 V~, 50 Hz
Bulb Type:	Non-replaceable 8W LED
	Conformity with all relevant EC Directive requirements.
	Class I product, must be connected to earth.
IP54	Protects against dust and low pressure jets of water from all directions. Limited ingress permitted.
	Waste electrical products should not be disposed of with household waste. Please recycle where facilities exist. Check with your Local Authority or local store for recycling advice.
	<p>L = Brown or Red</p> <p>N = Blue or Black</p> <p> = Green/Yellow</p>

